

ETS5

Embedded, Smart, Wireless

KNX France – Atelier Rexel
16 juin 2014
Paris

www.knx.org

ETS5, Embedded, Smart, Wireless!

In the next 5 minutes...



Then, Now, Tomorrow*

An ETS travel through time until Today
Outlook on the new **ETS5** available as from
October 2014!



* Star Trek Next Generation; final episode

ETS5, Embedded, Smart, Wireless!

Light + Building 2010



KNX presents the new ETS4!

Easy!

Fast!

Open!

User interface

Im-/export

Open XML format





Solution oriented

Unlimited possibilities

Only on demand



ETS5, Embedded, Smart, Wireless!

Light + Building 2014



KNX presents the new **ETS5!**

Embedded! Everything integrated
Smart! Clear and tidy
Wireless! RF as easy as TP



Embedded! Smart! Wireless!

Now the „*slogans*“ in more details!

Explanation → Implementation → Advantages & Benefits

Embedded?

ETS5, Embedded, Smart, Wireless!

ETS5 & Embedded



Explanation → Implementation → Advantages & Benefits

Today ETS uses external (software-) components, e.g. a database server, an extra dongle driver or a separate interface module for KNX bus access.

Embedded

Integrate functions directly into the ETS!

ETS5, Embedded, Smart, Wireless!

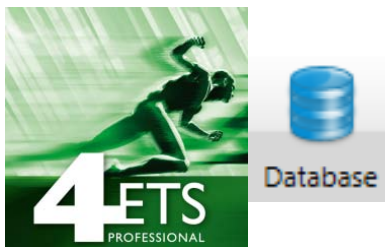
ETS5 & Embedded



Explanation → **Implementation** → Advantages & Benefits

ETS5 does not use an external (SQL) database anymore!

ETS5 project/ product data directly stored without intermediate steps in standard (XML) files.



ETS5, Embedded, Smart, Wireless!

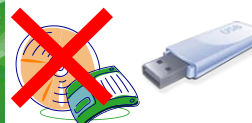
ETS5 & Embedded



Explanation → **Implementation** → Advantages & Benefits

ETS5 uses a new license dongle with integrated USB memory able to store ETS data!

Licenses stored directly on the dongle, an extra dongle driver is not needed anymore!



ETS5, Embedded, Smart, Wireless!

ETS5 & Embedded



Explanation → Implementation → Advantages & Benefits

Embedded

Minimize dependencies and error sources

Fewer components means fewer versions dependencies

Reduce installation effort

Installation time reduced by 50%, setup size reduced from 550 MB → ~ 250 MB

Reduce interfaces → increase access time

Export and import times reduced again by 50%, browsing through ETS views again accelerated

Increase comfort

Dongle licenses work immediately on each computer without extra license installation, ETS data always at hand on the USB memory stick

Smart?

ETS5, Embedded, Smart, Wireless!

ETS5 & Smart



Explanation → Implementation → Advantages & Benefits

Extra windows/ dialogs have negative effect on clear structure.

Functions spread over several windows when processing a task.

Icons/ menus take a lot of screen space, e.g. on smaller displays.

Smart

Enlarge usable workspace!

Optimize user interface and design!

Improve look and content of functions!

ETS5, Embedded, Smart, Wireless!

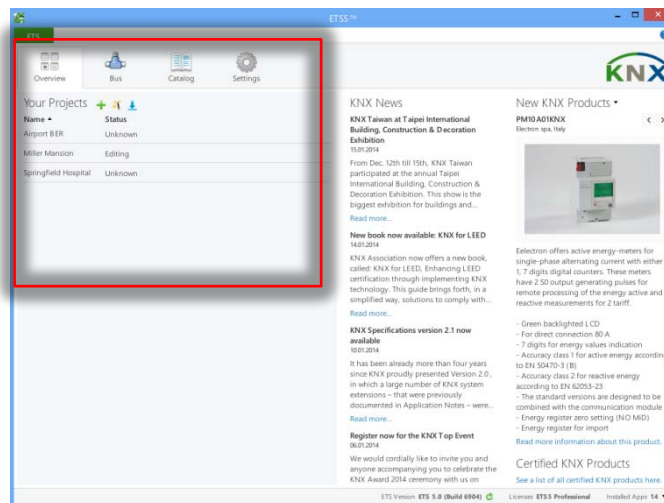
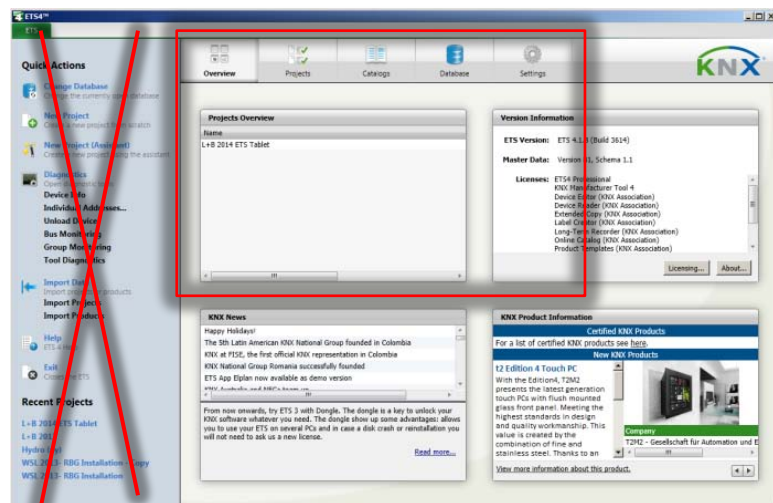
ETS5 & Smart



Explanation → **Implementation** → Advantages & Benefits

The ETS5 optimizes work space, more structured!

Work space



ETS5, Embedded, Smart, Wireless!

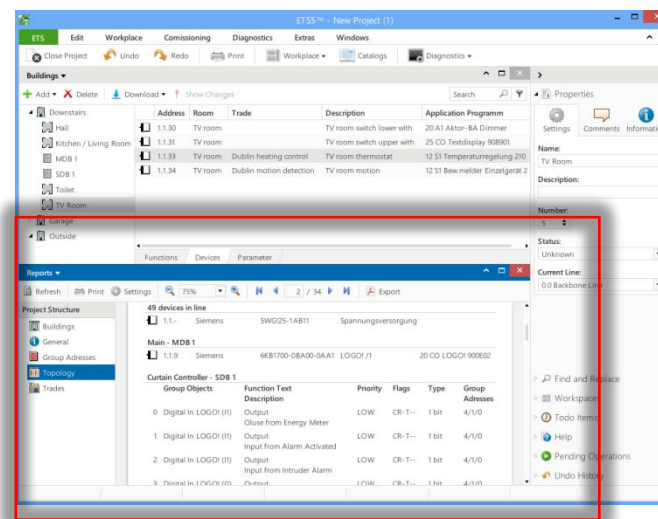
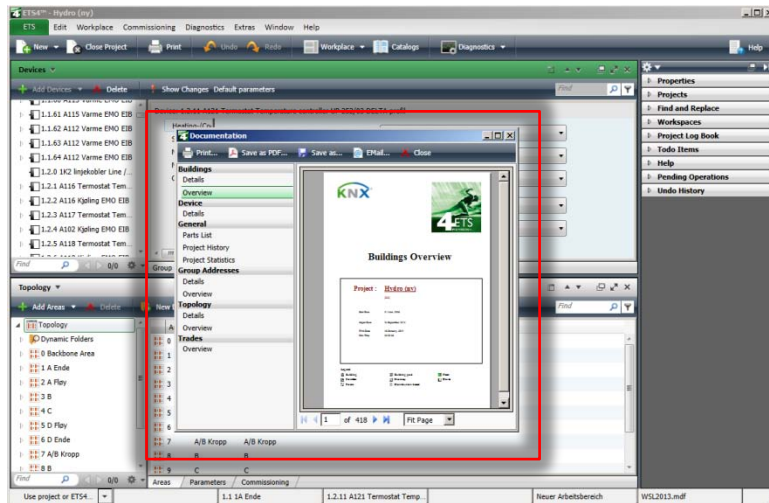
ETS5 & Smart



Explanation → **Implementation** → Advantages & Benefits

The ETS5 integrates functions!

User interface and design



ETS5, Embedded, Smart, Wireless!

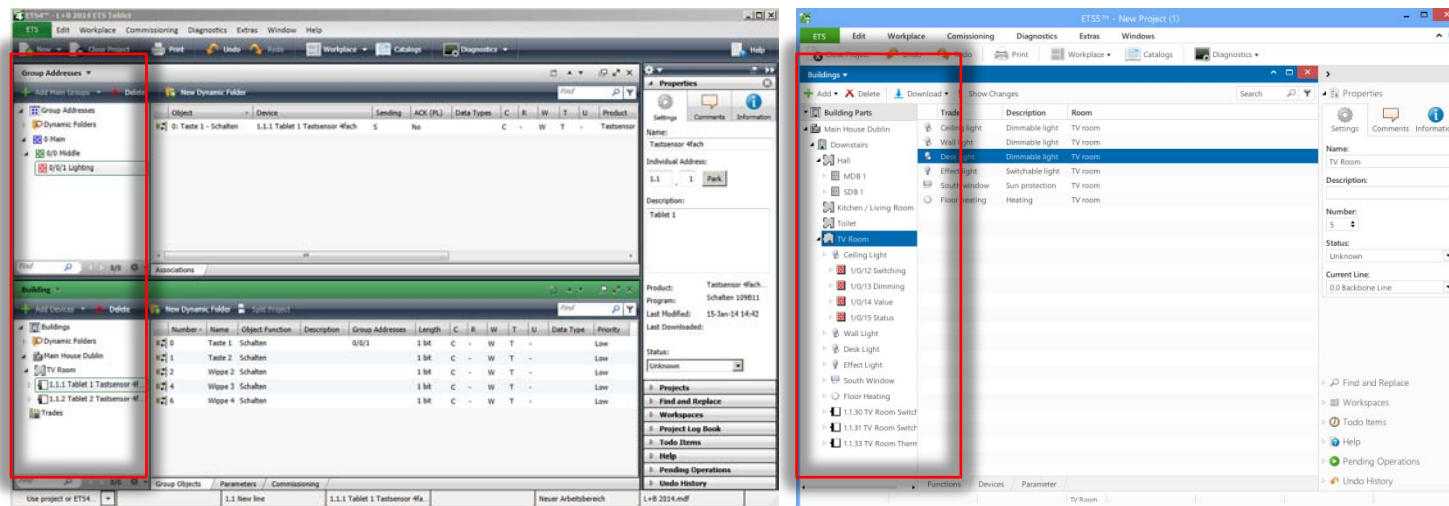
ETS5 & Smart



Explanation → **Implementation** → Advantages & Benefits

The ETS5 aggregates functions and shortens workflows!

Look and content



ETS5, Embedded, Smart, Wireless!

ETS5 & Smart



Explanation → Implementation → Advantages & Benefits

Smart

Optimize work space

More space on the screen for project commissioning thanks to smaller icons and smaller window frames

Aggregate functions

Reduce work time via shorter ways for *Drag & Drop* actions

Improve windows behavior & design

Reduce the time to get acquainted with ETS by taking over and adapting to existing Windows® style guides

Wireless?

ETS5, Embedded, Smart, Wireless!

ETS5 & Wireless



Explanation → Implementation → Advantages & Benefits

Today a KNX RF installation is parameterized in ETS via devices with special (Plug In) software, also commissioned in a *special* way. KNX radio needs to be seamlessly embedded into the today's KNX system.

Wireless

Use of KNX radio in an ETS project must be as easy as is already the case for Twisted Pair or Power Line!

ETS5, Embedded, Smart, Wireless!

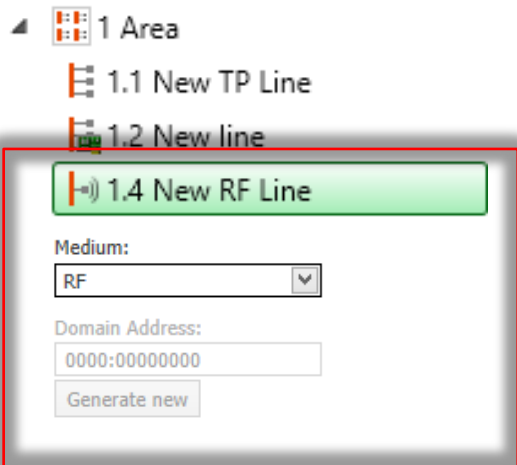
ETS5 & Wireless



Explanation → **Implementation** → Advantages & Benefits

The ETS5 can handle KNX RF *System Mode* devices!

Radio „lines“



ETS5, Embedded, Smart, Wireless!

ETS5 & Wireless



Explanation → Implementation → Advantages & Benefits

Wireless

Extend projects

Existing ETS projects can be easily extended with KNX radio. New KNX radio projects can be created and parameterized in an easy way.

Comfort

Perform editing of radio “lines” comfortably and in an easy way as on other KNX media.

Diagnostics

With KNX RF USB stick and ETS - without local cable - scan wireless your KNX installation.

ETS5, Embedded, Smart, Wireless!



More?

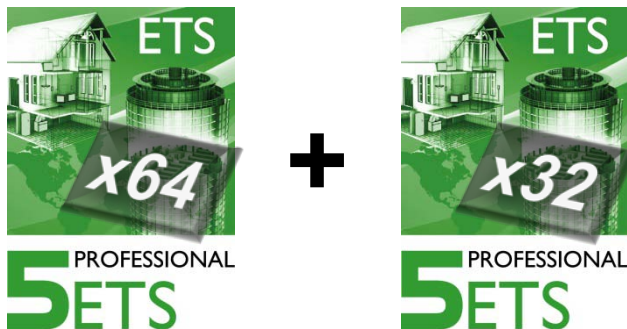
ETS5, Embedded, Smart, Wireless!

ETS5 & More



Also new in ETS5!

- ETS with additional 64- bit power for larger size projects



- Improved view of parameter values, e.g. parameter changes on multiple selected devices
- New decoding of KNX data in monitor for improved diagnostics

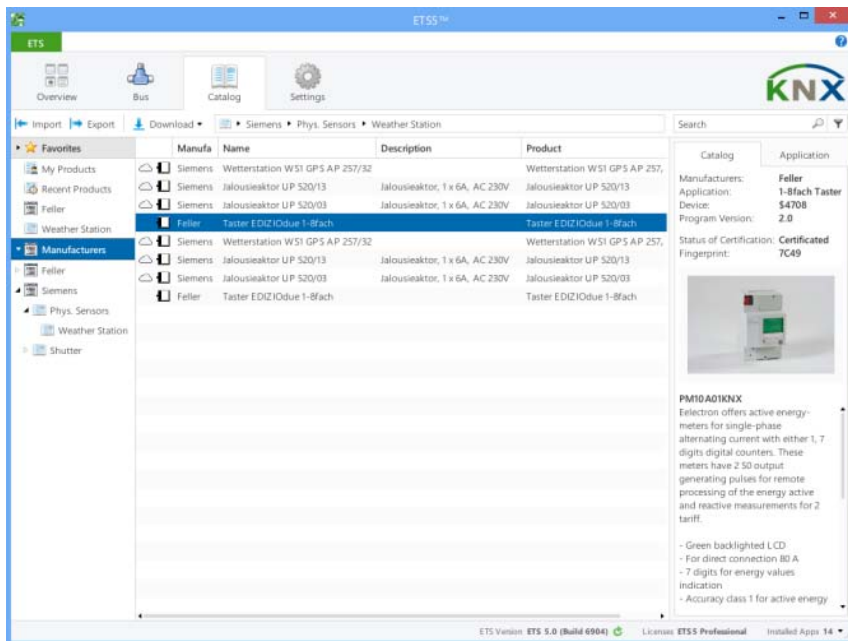
ETS5, Embedded, Smart, Wireless!

ETS5 & More



Also new in ETS5!

- Extended ETS App Online Catalog, more content from KNX products



ETS5, Embedded, Smart, Wireless!

Test it!



Join us in the ETS5 beta test, starting from tomorrow!

Registration via info@knx.org



ETS5, Embedded, Smart, Wireless!

Buy!



**The ETS5 is available from autumn 2014 onwards.
For customers of an ETS3/4 attractive upgrade
conditions will be available.**

Thanks for your attention!