

KNX France ETS 5 conference

News from KNX International

Joost Demarest – KNX CTO

www.knx.org

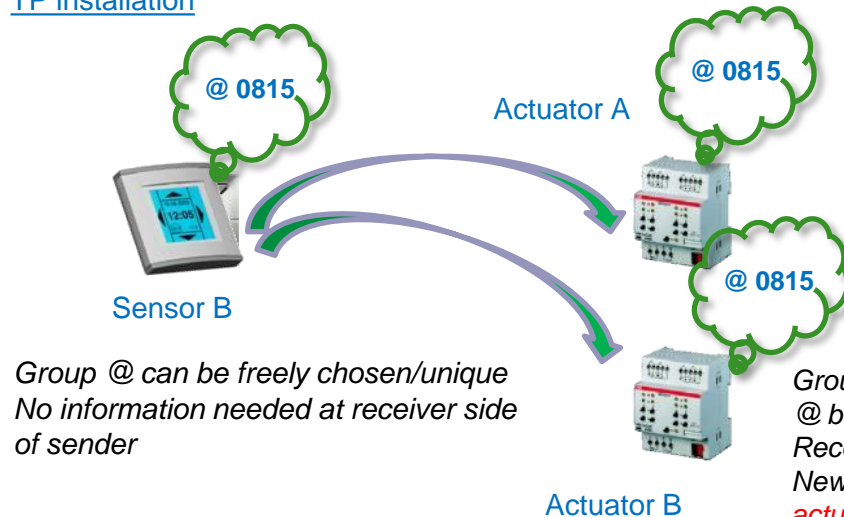
Content

- **Support of RF in ETS: implications?**
- **Novelty: KNX RF Energy Harvesting**
- **The growing KNX community**
 - KNX members
 - KNX certified training centers
 - KNX certified partners
 - KNX national groups
- **KNX for newbies: ETS eCampus**
- **KNX Online Shop versus MyKNX!**
- **KNX activities worldwide**

KNX RF S-Mode (1)

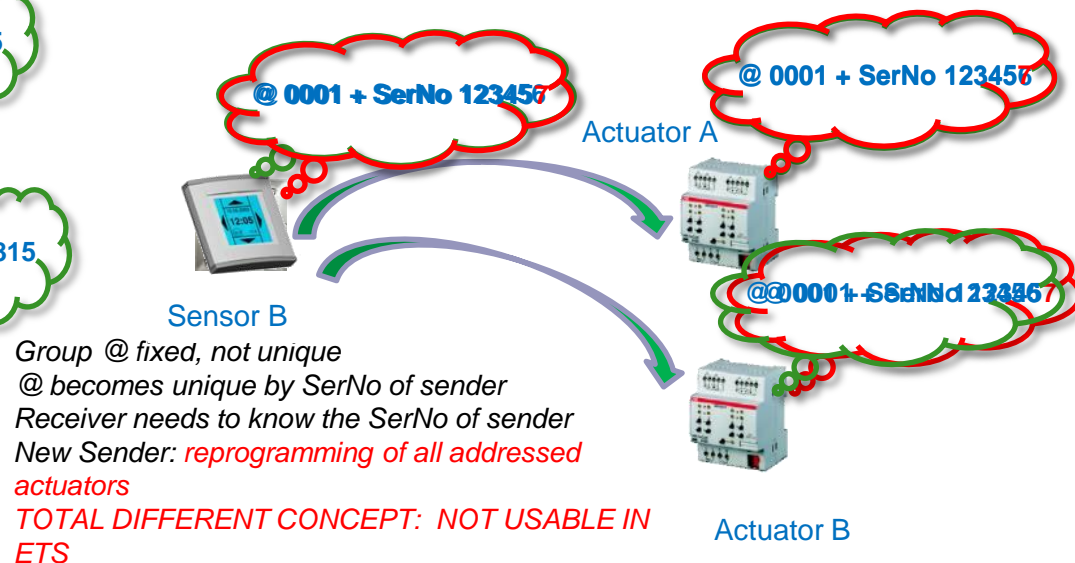
- Why RF in ETS?
 - ETS needs to support all available KNX media
 - E-Mode is ideal for smaller installations, S-Mode offers more flexibility
- Why need for KNX Standard update for RF support in ETS?
 - ETS support not in the focus when defining RF medium in 2001
 - E-Mode
 - Needed possibility to develop unidirectional senders (while at that time more cost-effective)

TP installation



Group @ can be freely chosen/unique
No information needed at receiver side of sender

RF installation E-Mode

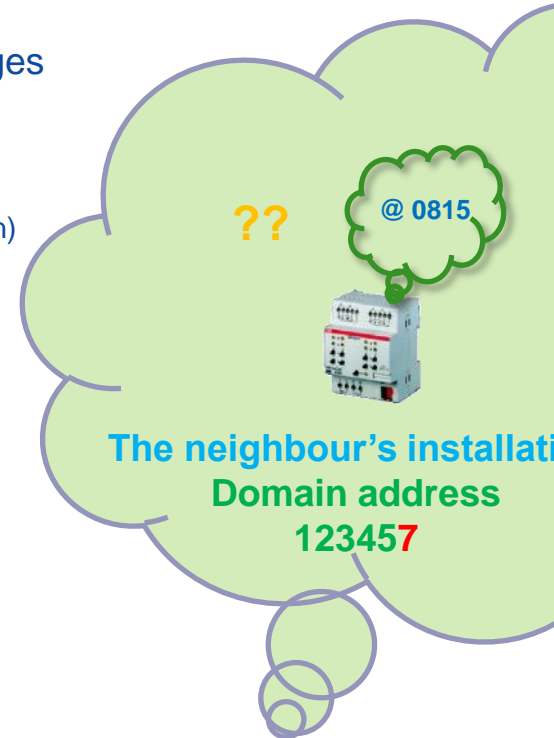
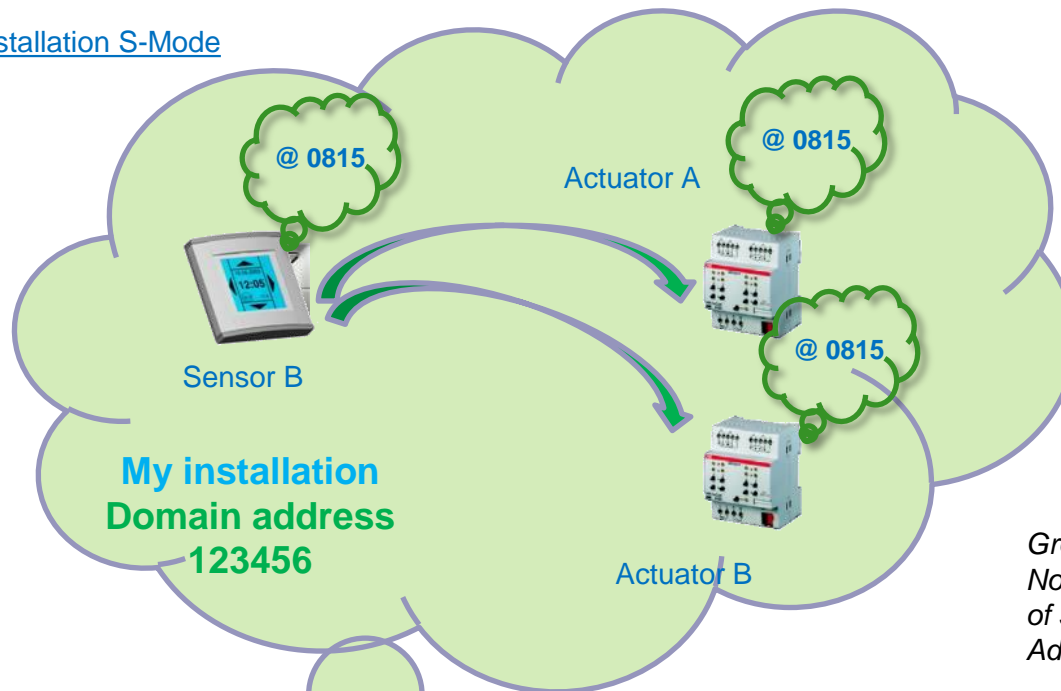


Group @ fixed, not unique
@ becomes unique by SerNo of sender
Receiver needs to know the SerNo of sender
New Sender: *reprogramming of all addressed actuators*
TOTAL DIFFERENT CONCEPT: NOT USABLE IN ETS

KNX RF S-Mode (2)

- Extension to the KNX Standard for RF S-Mode
 - Use same system profiles as on TP but with minor RF changes
 - Exactly same approach/look & feel for configuration of devices as TP
 - Add domain address to the RF devices (as is done in Powerline) for Group Communication to separate neighbouring installations
 - Possibility to have semi-bidirectional devices (only during configuration)
 - New Coupler module (e.g. TP/RF) standardized

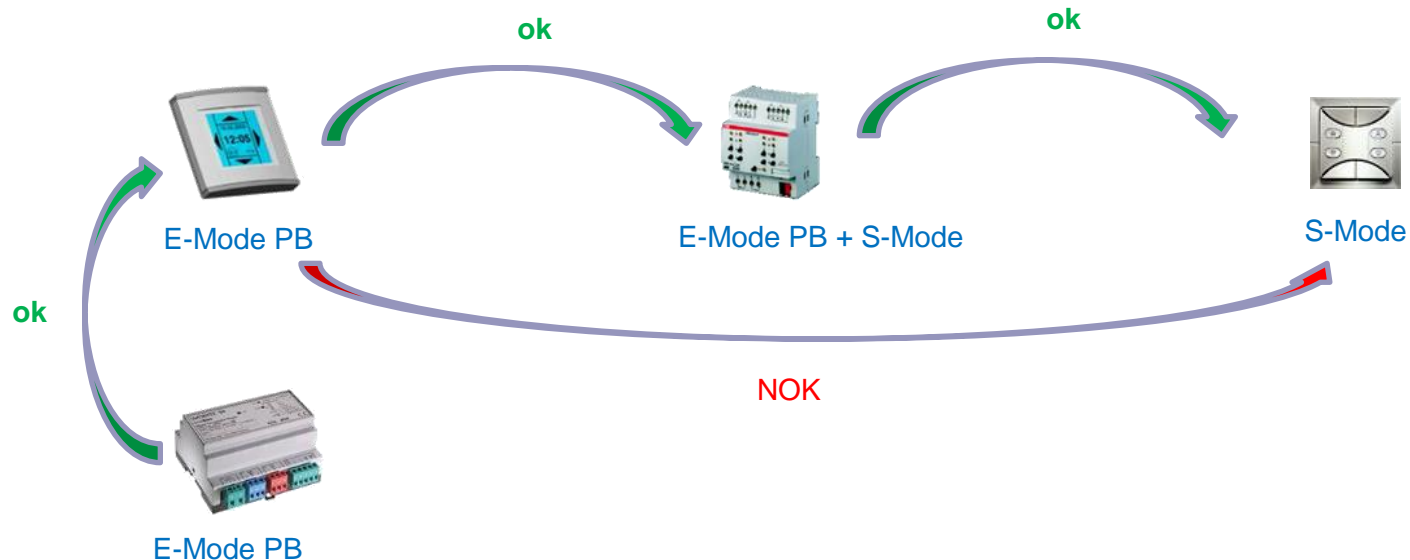
RF installation S-Mode



*Group @ can be freely chosen/unique
No information needed at receiver side of sender
Adding of one common domain address*

KNX RF S-Mode (3)

- Current Possibilities for KNX manufacturers following RF S-Mode extensions
 - Continue developing E-Mode RF devices only
 - Develop KNX RF compatible devices according new S-Mode Profile
 - and one or even more of the E-Mode profiles (E-Ctrl or E-PB)
 - And/or own configuration methods
 - Stricter labelling requirements defined by KNX Certification Group to be able to clearly distinguish devices with different configuration mode



KNX technology extensions: KNX RF energy harvesting

Harvester solution

Member company ZF developed a mechanical “energy harvester” solution, capable to supply KNX RF devices sending standard KNX RF telegrams with sufficient power.



- energy harvesting wireless system
- energy production on press [in]/ release [out] action (e.g. for KNX dimming)
- available as integrated module solution to embed it in own designs
- small size, with high energy efficiency and low actuation force
- maintenance free – no batteries need to be changed
- long mechanical life, up to 1,000,000 operations
- technical data e.g. dimensions, total travel/ amount of generated energy avail. at ZF

Concept proof & demonstration

Solution was presented to KNX as an application with KNX RF “harvesting” sender, linked to an standard (today available) KNX RF actuator.

ZF presented the solution at the recent 0414 light+building fair

All these manufacturers can't be wrong!

KNX members **366 manufacturers from 37 countries**



October 2014: 366 in 37 countries!

Recent new member: LG/Korea

www.knx.org

All these training centers can't be wrong



October 2014: 299 in 55 countries!



All these installers can't be wrong



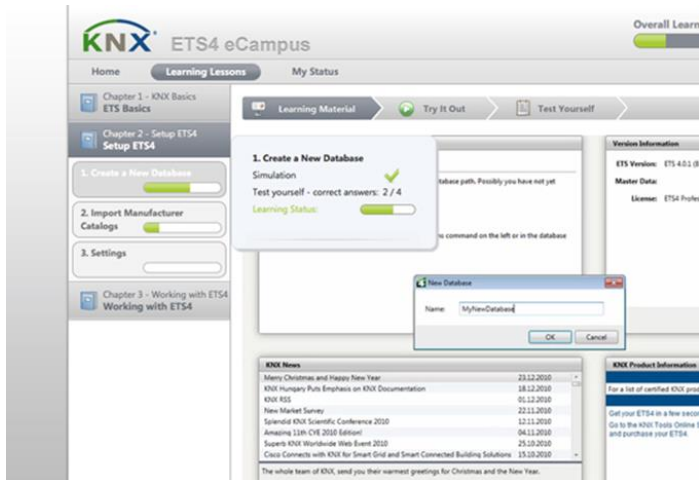
October 2014: 43500 in 126 countries!



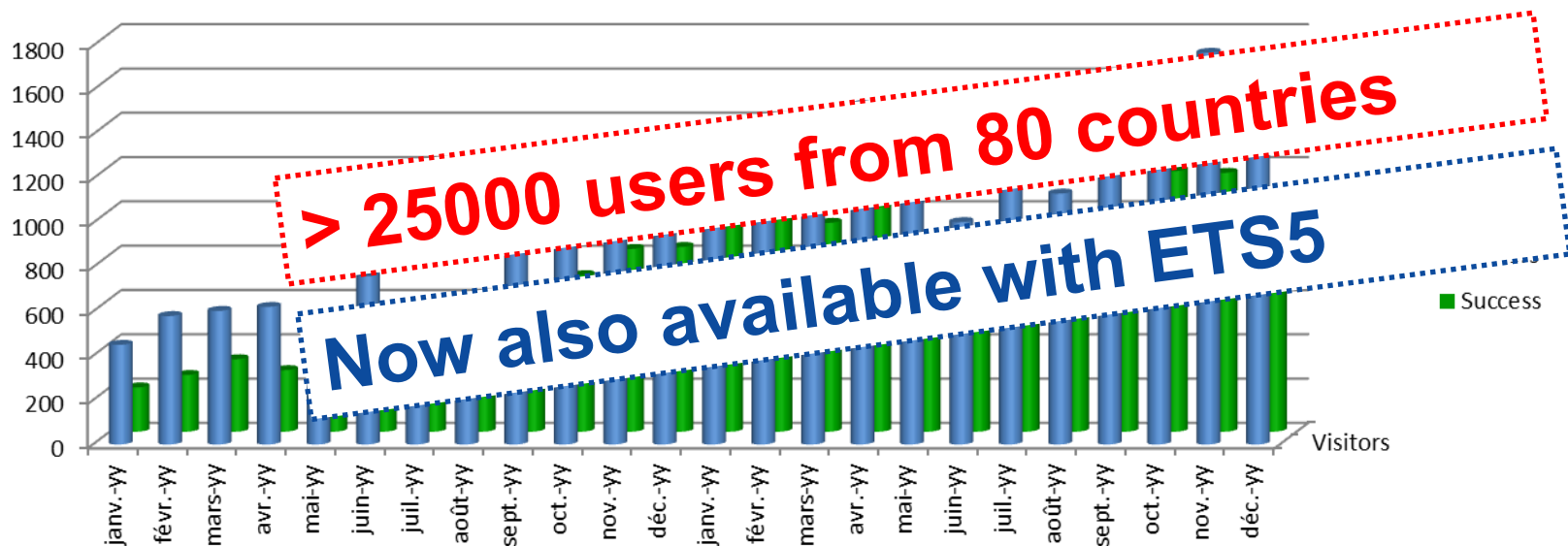
Local representation of KNX: 40 KNX National Groups



ETS eCampus: a clear success!



- Get acquainted with KNX and ETS quick and easy!
 - Reduced effort:
 - on average 2 hours
 - Free of charge
 - For each chapter: exercise + test
 - When passed: eCampus certificate + ETS Lite



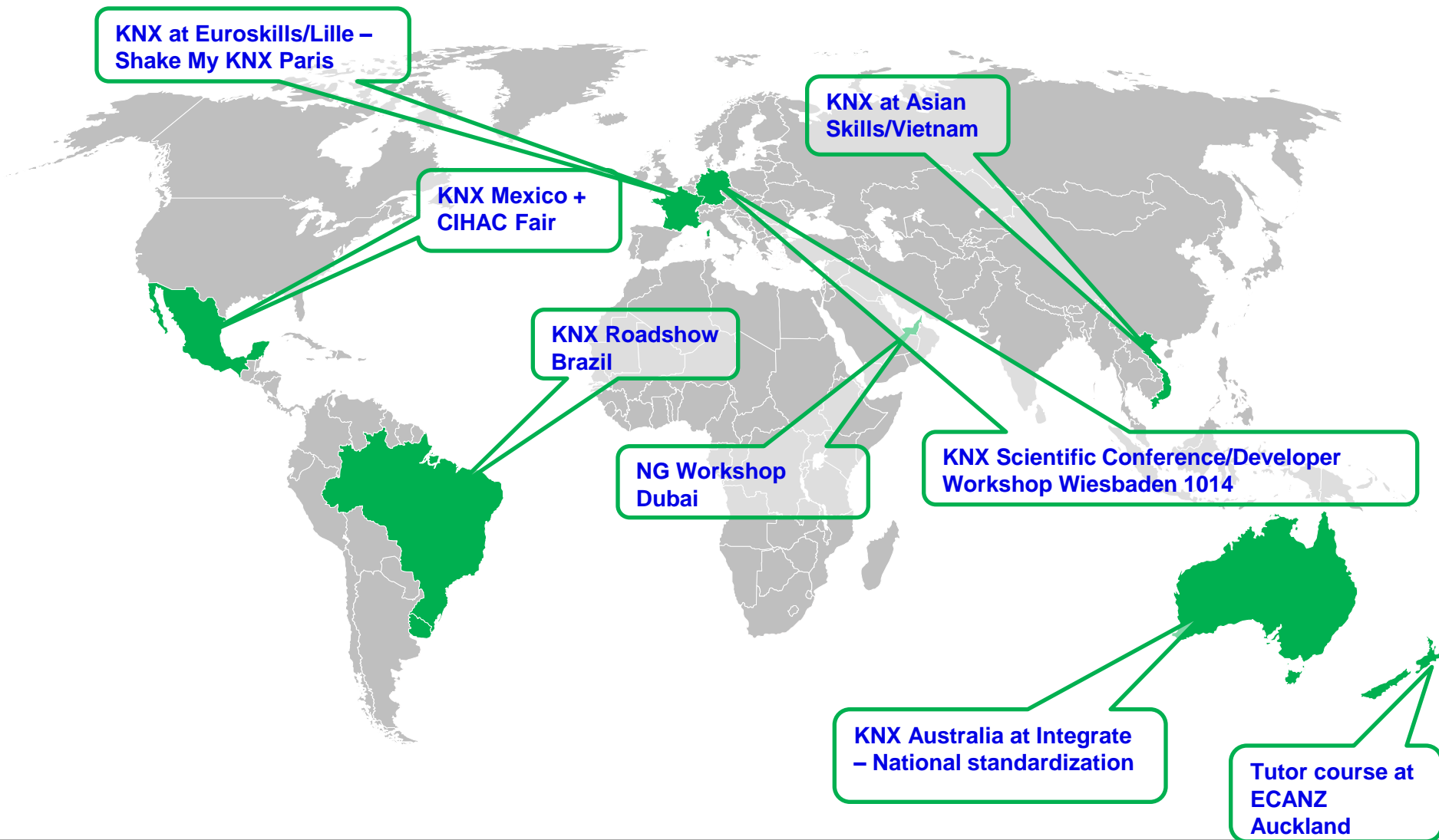
Bye Bye Onlineshop Welcome: my KNX!



The screenshot displays the KNX myKNX portal interface. At the top, the KNX logo is visible on the left, and a language selector (Français) and a shopping cart icon with a '2' badge are on the right. Below the header is a green navigation bar with links: Accueil, Magasin, Support, Mon compte, and Téléchargements. The 'Mon compte' link is highlighted in blue. Below this bar, a secondary navigation bar contains links: Mes détails, Mes Produits, Mes documents, Mes Bons, Mes Applications, and Mes Cours. The 'Mes détails' link is highlighted in blue. The main content area is divided into two sections. The left section, titled 'Centre Support', contains links for 'Logiciel', 'ETS Apps', 'Software', and 'ETS5 Lite'. The right section, titled 'Vos informations de compte', contains a form for updating account information. The form has two main parts: 'Vos informations personnelles' and 'Vos informations de compte'. The 'Vos informations personnelles' part includes fields for Title (Mr.), First Name (Adrian), Last Name (Müller), Language of Communication (Deutsch), Place of Birth (Sinnicolau Mare), and Date of Birth (16/09/1979). The 'Vos informations de compte' part includes fields for Email (info@elektro-mueller-ffb.de), New Password, and Confirm New Password. A 'Précédent' button is located at the bottom left of the page.

KNX Association International

Recent KNX Internationalization activities



Recent KNX activities worldwide



*KNX at CIHAC Fair
Mexico 1014*



*KNX Roadshow Brazil
1014*



*10th NG
workshop in
Dubai 0914*



*KNX at Euroskills
Lille 1014*



*Hager Shake my KNX
Paris 0914*

*KNX Forum
Czech
Republic
0914*

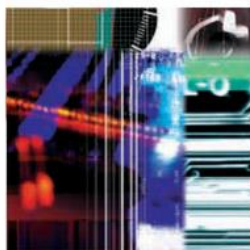
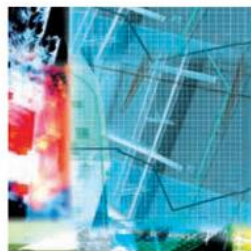


*KNX Tutor
Training
Auckland
0814*



KNX at Integrate Australia 0814





**Thank you for your
attention!**

**Contact: info@knx.org –
www.knx.org**

www.knx.org