



**Le standard mondial
pour la gestion technique
des bâtiments résidentiels et tertiaires**



Présentation ETS5

22 juin 2015

Nîmes / 10h

Patrice de Carné

Président de KNX France

www.knx.fr

Présentation ETS5

Programme

10h00 : Accueil par Direction IUT de Nîmes

10h10 : Introduction et Présentation de KNX – Patrice de Carné (ABB France) et Joost Demarest (KNX Association)

10h20 : KNX et Gestion technique au service de la maîtrise des coûts d'exploitation du bâtiment – Jean-Yves Bouchet (Rexel) et Laurent Melmoux (Siemens)

10h40 : Présentation du nouvel outil de paramétrage ETS5 – Jean-François Klotz (LECS)

12h00 : Questions / Échanges

13h00 : Pousuite discussions autour du buffet

Le standard de référence



→ Un standard mondial

- Norme européenne EN 50090
- Norme internationale ISO/EIC 14 543-3
- Norme chinoise GB/T 20965

→ Un protocole reconnu

- 374 membres industriels dans le monde
- 47 695 KNX Partners dans 136 pays
- 2 278 KNX Partners en France

→ Une solution pertinente

- Pérennité
- Interopérabilité
- Qualité



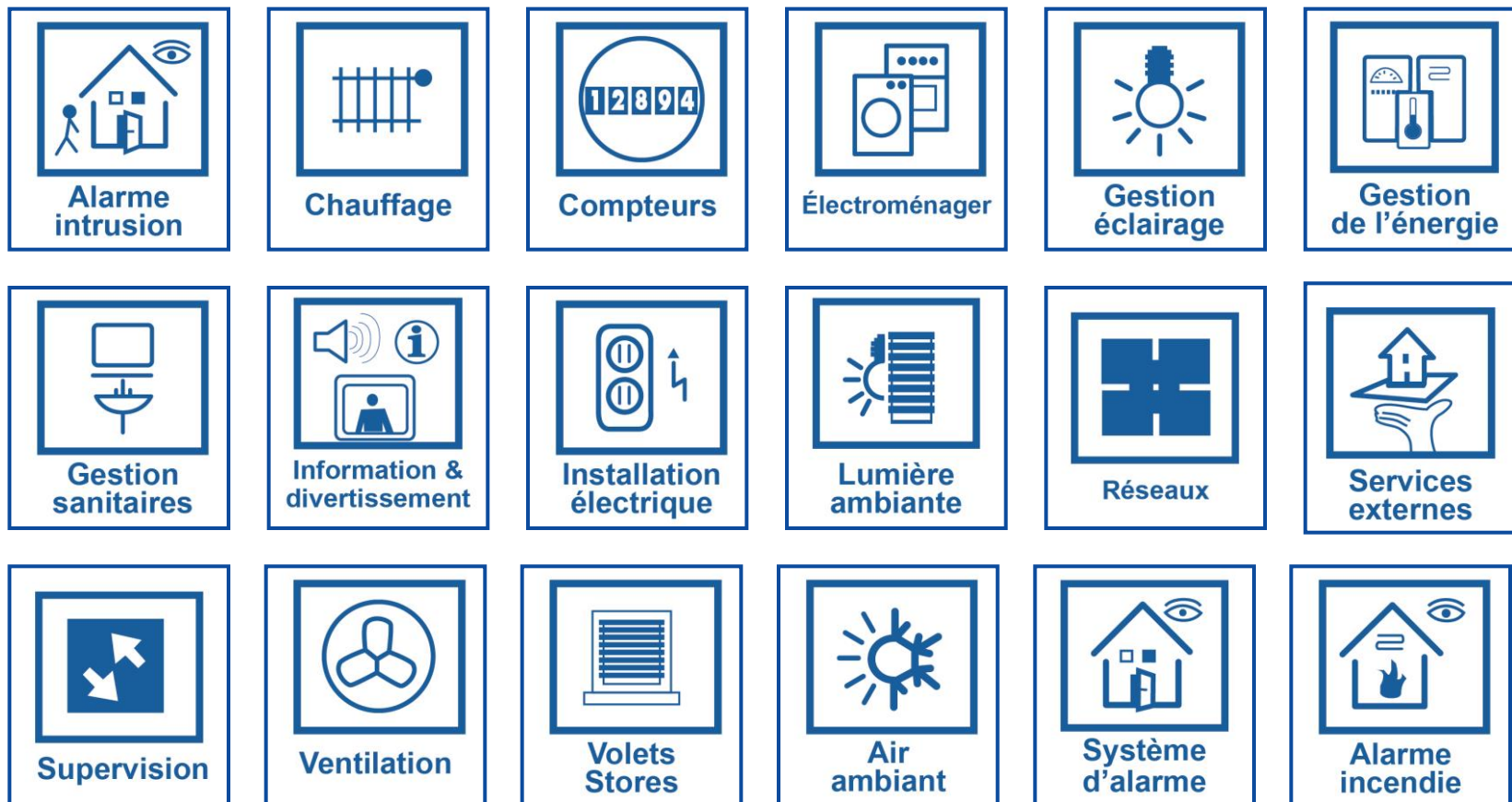
Le rôle de KNX en France

- > Assurer la promotion technique des solutions KNX
- > Favoriser les échanges avec les filières du bâtiment et les professions concernées afin d'enrichir et d'optimiser les solutions destinées aux équipements techniques
- > Adapter l'usage de la norme aux spécificités culturelles et structurelles de la France
- > Mettre en place une stratégie et des actions de communication à destination du marché

Les membres de KNX France



Domaines d'application



Réalisations



Bateau "La Belle Adriatique"



Boutique Guerlain à Paris



Pôle emploi Diguoin



Hôtel Arboisie - Megève

Réalisations



Lycée Fénélon



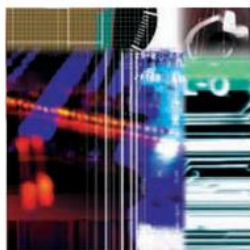
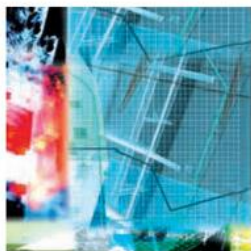
Maison "Construisons demain"



Maison Domotique adaptée au handicap



Grand Hôtel - Bordeaux



KNX France ETS 5 conference

News from KNX International

Joost Demarest – KNX CTO

www.knx.org

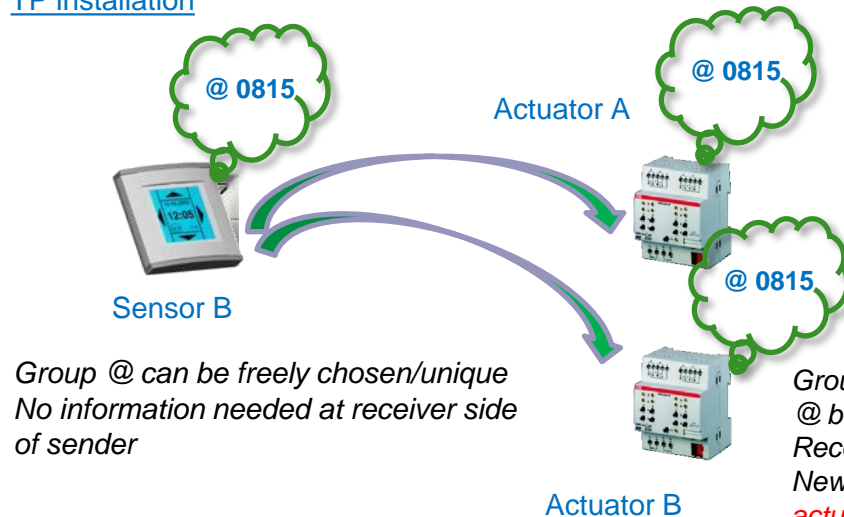
Content

- **Support of RF in ETS5: implications?**
- **Novelty: KNX RF Energy Harvesting**
- **The growing KNX community**
 - KNX eCampus
 - KNX Online Shop versus MyKNX
 - The overall growth figures
 - The newest KNX national group
 - Recent KNX activities worldwide
- **Upcoming novelties KNX/ETS**
 - IP and Data Security – support in ETS 5.5
 - ETS Tablet
 - ETS Core
- **Save the date : 25th anniversary KNX – worldwide KNX event**

KNX RF S-Mode (1)

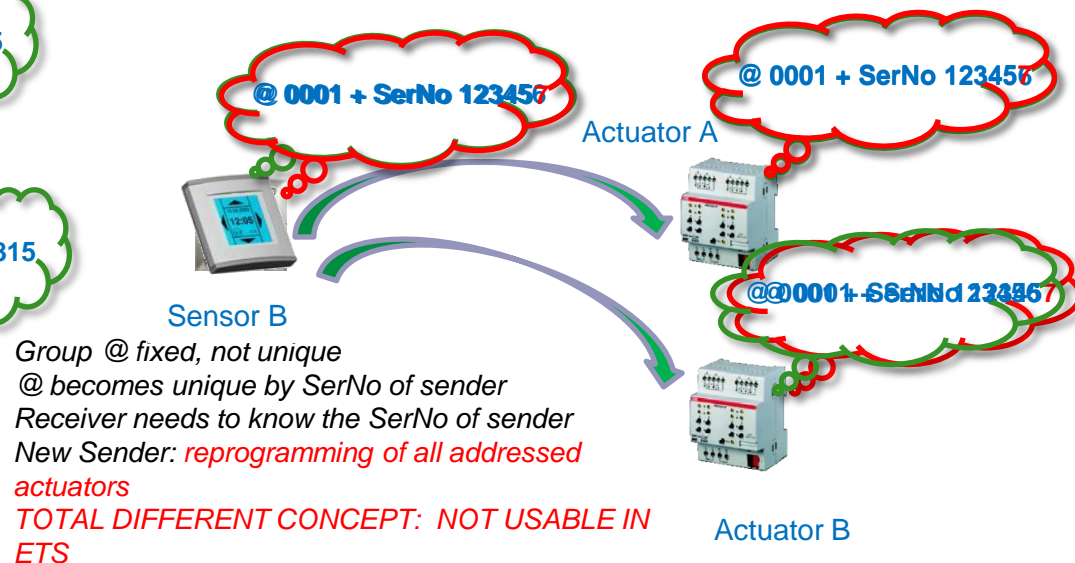
- Why RF in ETS?
 - ETS needs to support all available KNX media
 - E-Mode is ideal for smaller installations, S-Mode offers more flexibility
- Why need for KNX Standard update for RF support in ETS?
 - ETS support not in the focus when defining RF medium in 2001
 - E-Mode
 - Needed possibility to develop unidirectional senders (while at that time more cost-effective)

TP installation



Group @ can be freely chosen/unique
No information needed at receiver side of sender

RF installation E-Mode

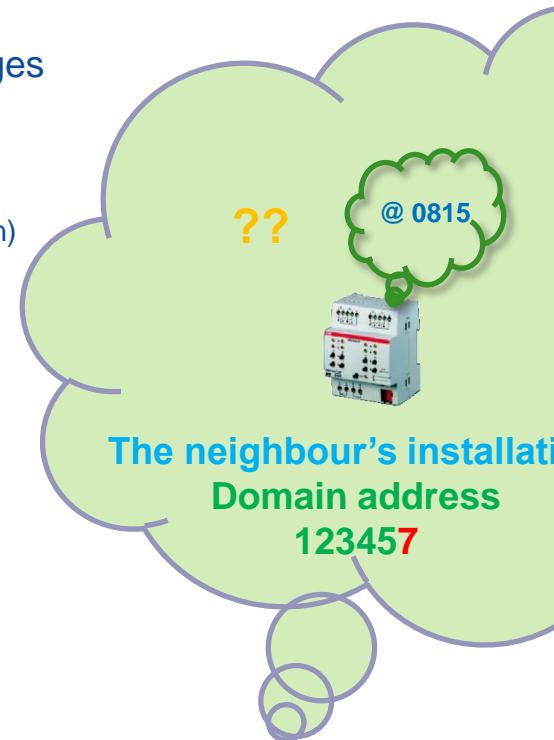
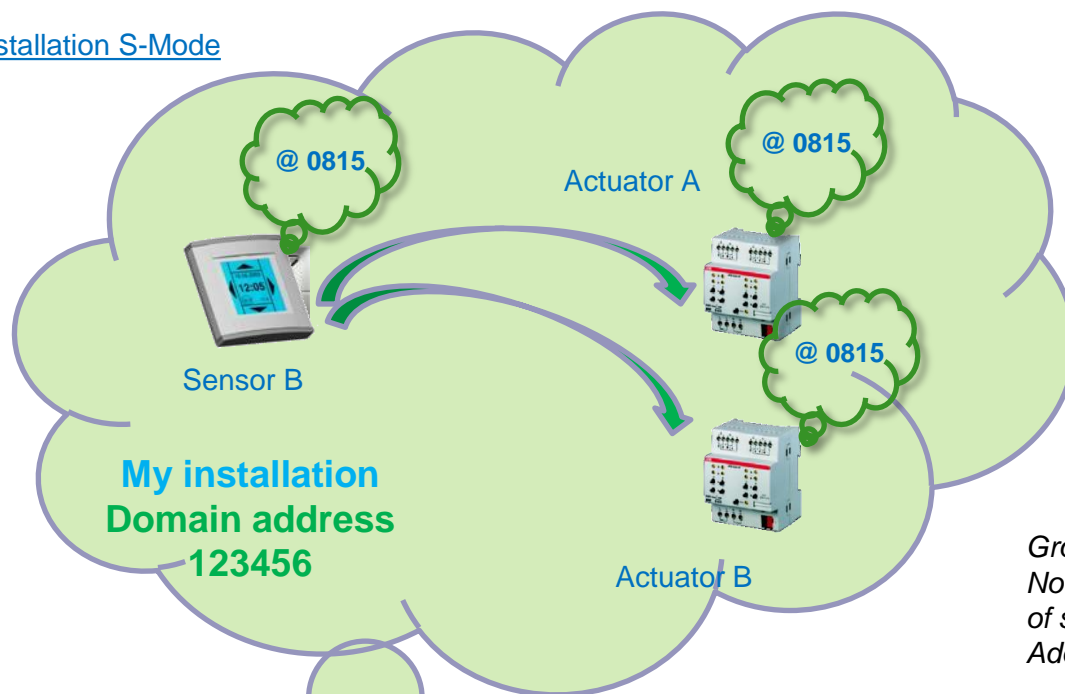


Group @ fixed, not unique
@ becomes unique by SerNo of sender
Receiver needs to know the SerNo of sender
New Sender: *reprogramming of all addressed actuators*
TOTAL DIFFERENT CONCEPT: NOT USABLE IN ETS

KNX RF S-Mode (2)

- Extension to the KNX Standard for RF S-Mode
 - Use same system profiles as on TP but with minor RF changes
 - Exactly same approach/look & feel for configuration of devices as TP
 - Add domain address to the RF devices (as is done in Powerline) for Group Communication to separate neighbouring installations
 - Possibility to have semi-bidirectional devices (only during configuration)
 - New Coupler module (e.g. TP/RF) standardized

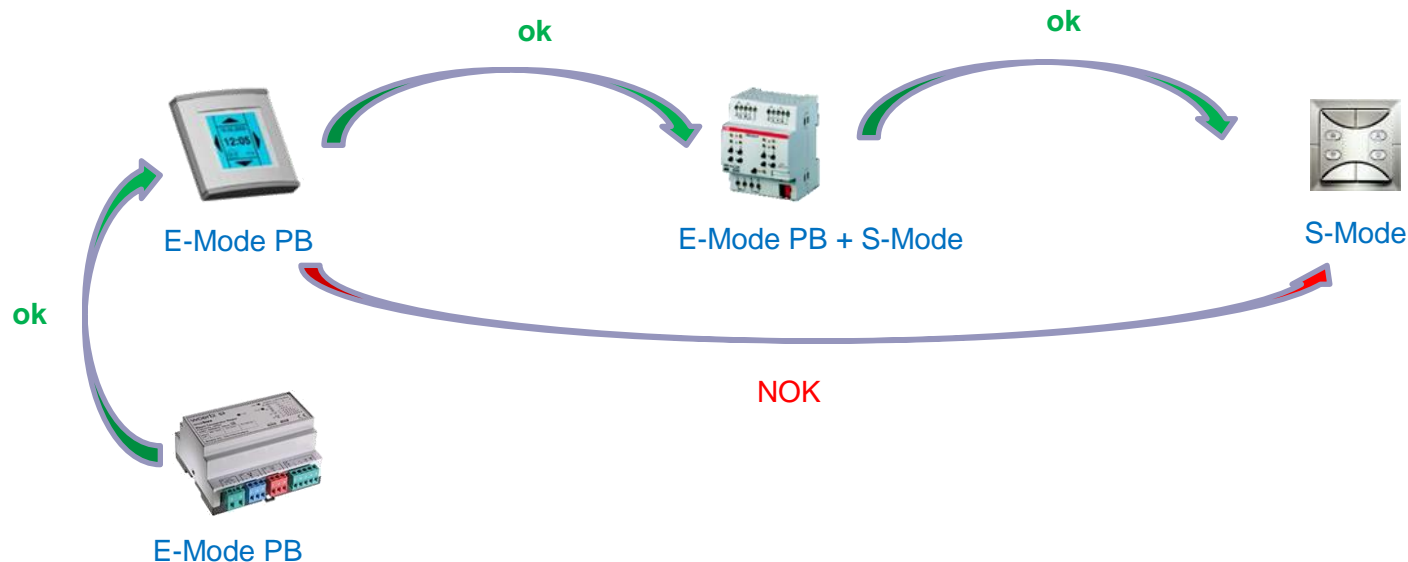
RF installation S-Mode



*Group @ can be freely chosen/unique
No information needed at receiver side of sender
Adding of one common domain address*

KNX RF S-Mode (3)

- Current Possibilities for KNX manufacturers following RF S-Mode extensions
 - Continue developing E-Mode RF devices only
 - Develop KNX RF compatible devices according new S-Mode Profile
 - and one or even more of the E-Mode profiles (E-Ctrl or E-PB)
 - And/or own configuration methods
 - Stricter labelling requirements defined by KNX Certification Group to be able to clearly distinguish devices with different configuration mode



KNX technology extensions: KNX RF energy harvesting

Harvester solution

Member company ZF developed a mechanical “energy harvester” solution, capable to supply KNX RF devices sending standard KNX RF telegrams with sufficient power.



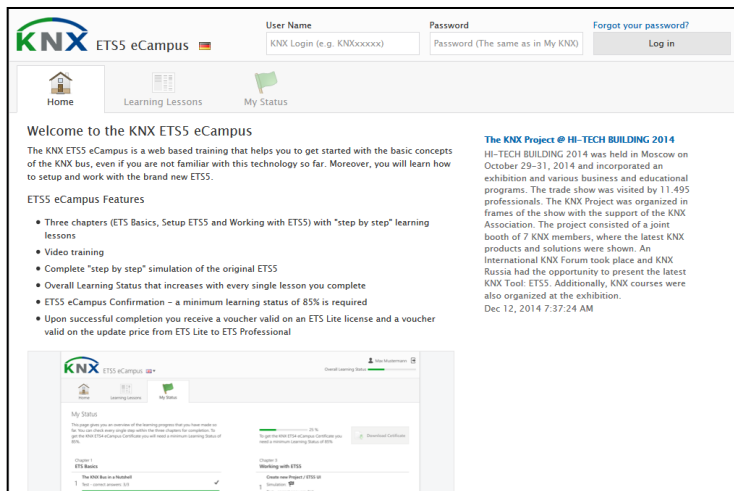
- energy harvesting wireless system
- energy production on press [in]/ release [out] action (e.g. for KNX dimming)
- available as integrated module solution to embed it in own designs
- small size, with high energy efficiency and low actuation force
- maintenance free – no batteries need to be changed
- long mechanical life, up to 1,000,000 operations
- technical data e.g. dimensions, total travel/ amount of generated energy avail. at ZF

Concept proof & demonstration

Solution was presented to KNX as an application with KNX RF “harvesting” sender, linked to an standard (today available) KNX RF actuator.

ZF presented the solution at the 2014 light+building fair

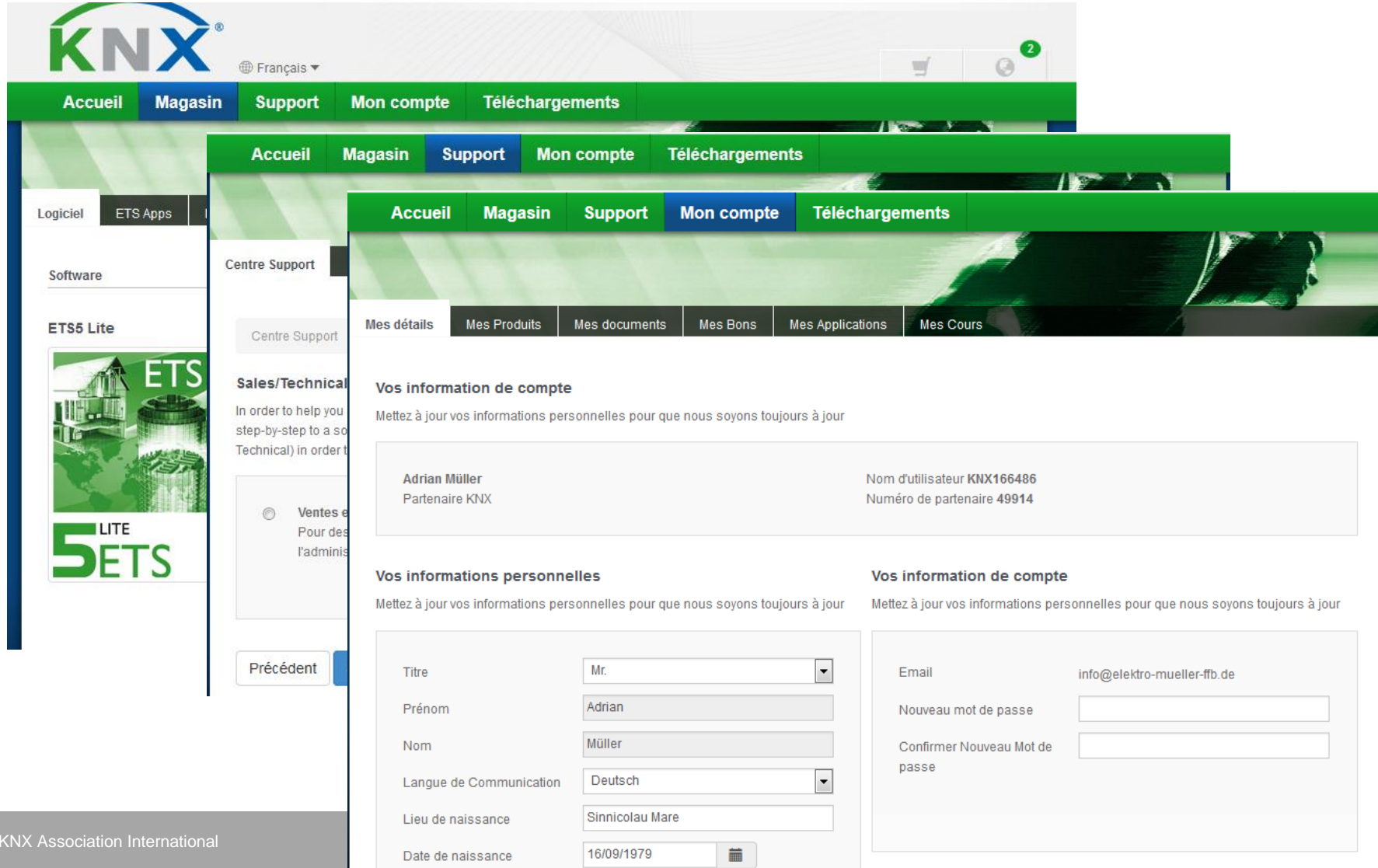
Want to get to know KNX? First step → eCampus!



- Get acquainted with KNX and ETS quick and easy!
 - Reduced effort:
 - on average 2 hours
 - Free of charge
 - For each chapter: exercise + test
 - When passed: eCampus confirmation + ETS Lite (only need to buy the dongle)



Bye Bye Onlineshop Welcome: my KNX!



The image shows a sequence of three overlapping screenshots of the KNX website, illustrating the transition from the online shop to the 'my KNX' account interface.

Top Screenshot (Online Shop): The header features the KNX logo, a language selector set to 'Français', and a shopping cart icon with a '2' badge. The main navigation bar includes 'Accueil', 'Magasin', 'Support', 'Mon compte', and 'Téléchargements'.

Middle Screenshot (Support Center): The 'Support' tab is active. The left sidebar shows 'Logiciel' and 'ETS Apps' under 'Software', and 'ETS5 Lite' with a 'LITE ETS' badge. The main content area is titled 'Centre Support' and includes a 'Sales/Technical' section with a description: 'In order to help you step-by-step to a solution (Technical) in order to...'. There is also a 'Ventes et Pour des l'adminis' section.

Bottom Screenshot (my KNX Account): The 'Mon compte' tab is active. The main content area is titled 'Vos information de compte' and includes a section for 'Vos informations personnelles' and a section for 'Vos information de compte' (password management).

Personal Information Section:

Titre	Mr.
Prénom	Adrian
Nom	Müller
Langue de Communication	Deutsch
Lieu de naissance	Sinnicolau Mare
Date de naissance	16/09/1979

Account Information Section:

Nom d'utilisateur	KNX166486
Numéro de partenaire	49914

Password Management Section:

Email	info@elektro-mueller-ffb.de
Nouveau mot de passe	
Confirmer Nouveau Mot de passe	

A (still) growing community



+ 63 **380**



LG



+ 23 **297**



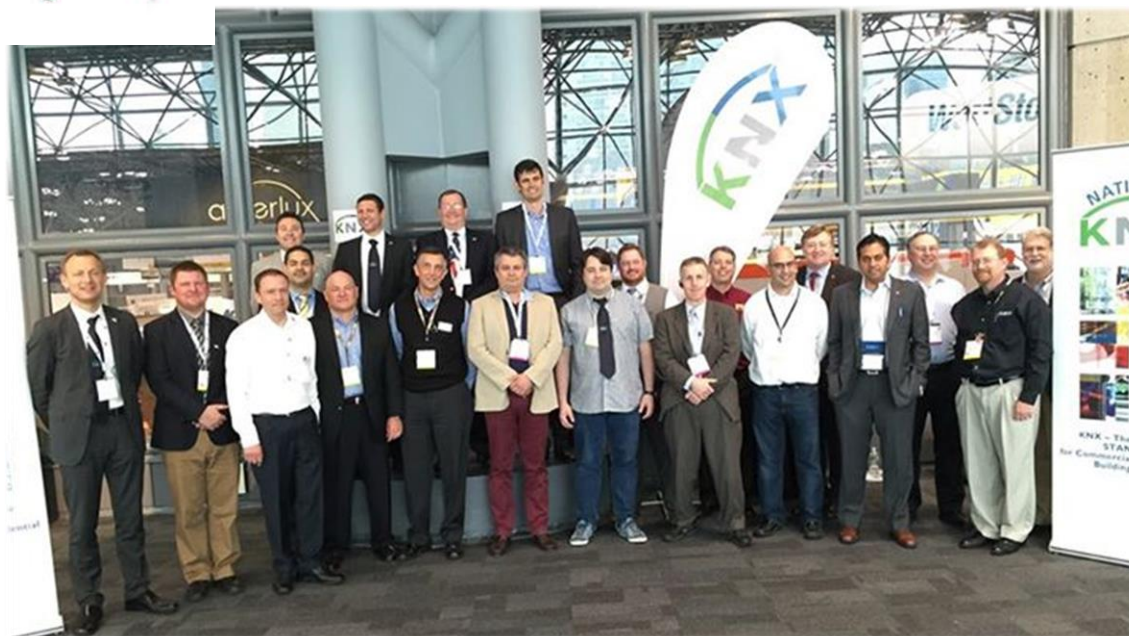
+ 5805 **45895**



+ 3 **42**



Novelty: KNX USA founded at Lightfair NYC



The elected Board

- Siemens (Presidency)
- Somfy (Vice-Presidency)
- DMC (Secretariat)

KNX now represented in 43 countries!

Recent KNX activities worldwide (1)



General Assembly NG Luxembourg



First KNX Tutor Course in Mexico



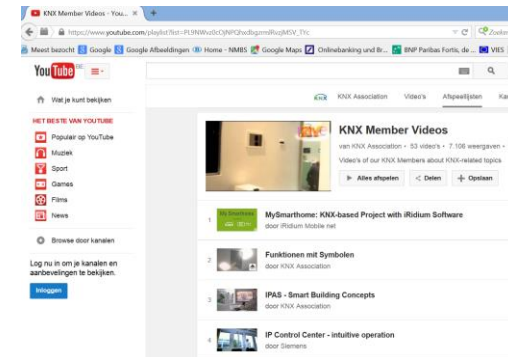
KNX Austria Awards '15 winners



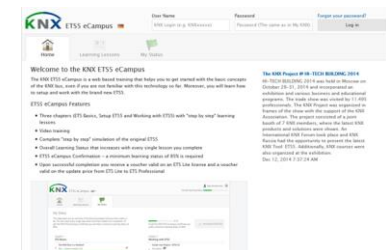
KNX SOA at Power & Electricity World Africa



New video for KNX newbies - electricians



Member section in KNX YouTube channel



eCampus in 7 languages (DE, UK, FR, ES, NL, FI, GR, ...)

Recent KNX activities worldwide/novelties (2)



KNX Greece UC meeting



KNX at ISE fair in Amsterdam



KNX UK awards



KNX Professionals Germany at Eltefa 2015



First KNX Basic course by Ivory Egg in NZ

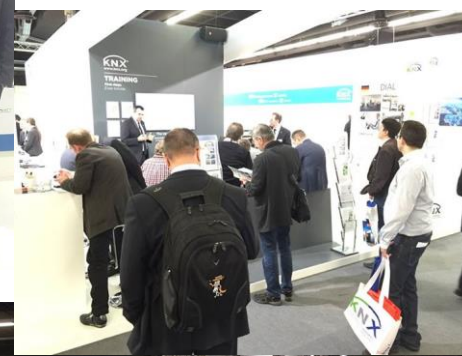


KNX BE at Batibouw

KNX at ISH

ISH

Frankfurt am Main
10. – 14. 3. 2015



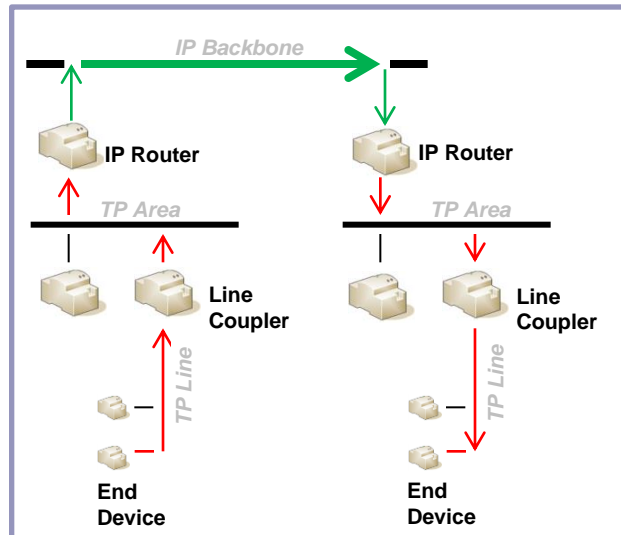
New KNX staff member
Mr. J. Arias
KNX Solutions

Upcoming KNX standard and tool extensions – KNX Security



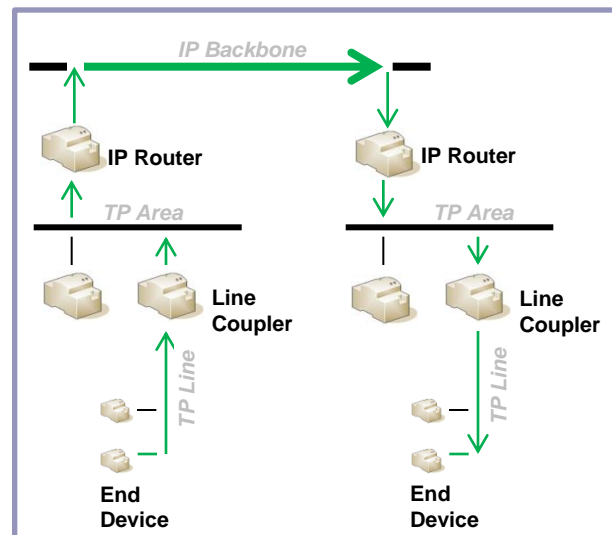
Technology Overview

KNXnet/IP Secure



All KNX telegrams between the two (or more) IP Routers are encrypted

Data Security



The group communication of a particular sender (one or more group objects) to another group object(s) is encrypted

- Unsecured communication (Red arrow)
- Secured communication (Green arrow)

- **KNXnet/IP Secure** and **Data Security** can be combined in one installation.

ETS Professional

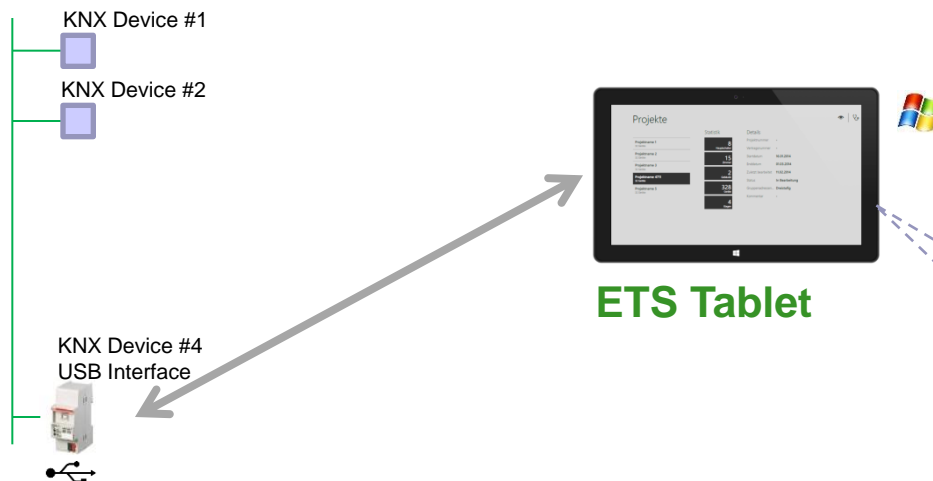


Functionality Excerpt

- Key management and distribution
- Establish secure link and download

Upcoming tool extensions: Tablet

Technology Overview



ETS Tablet

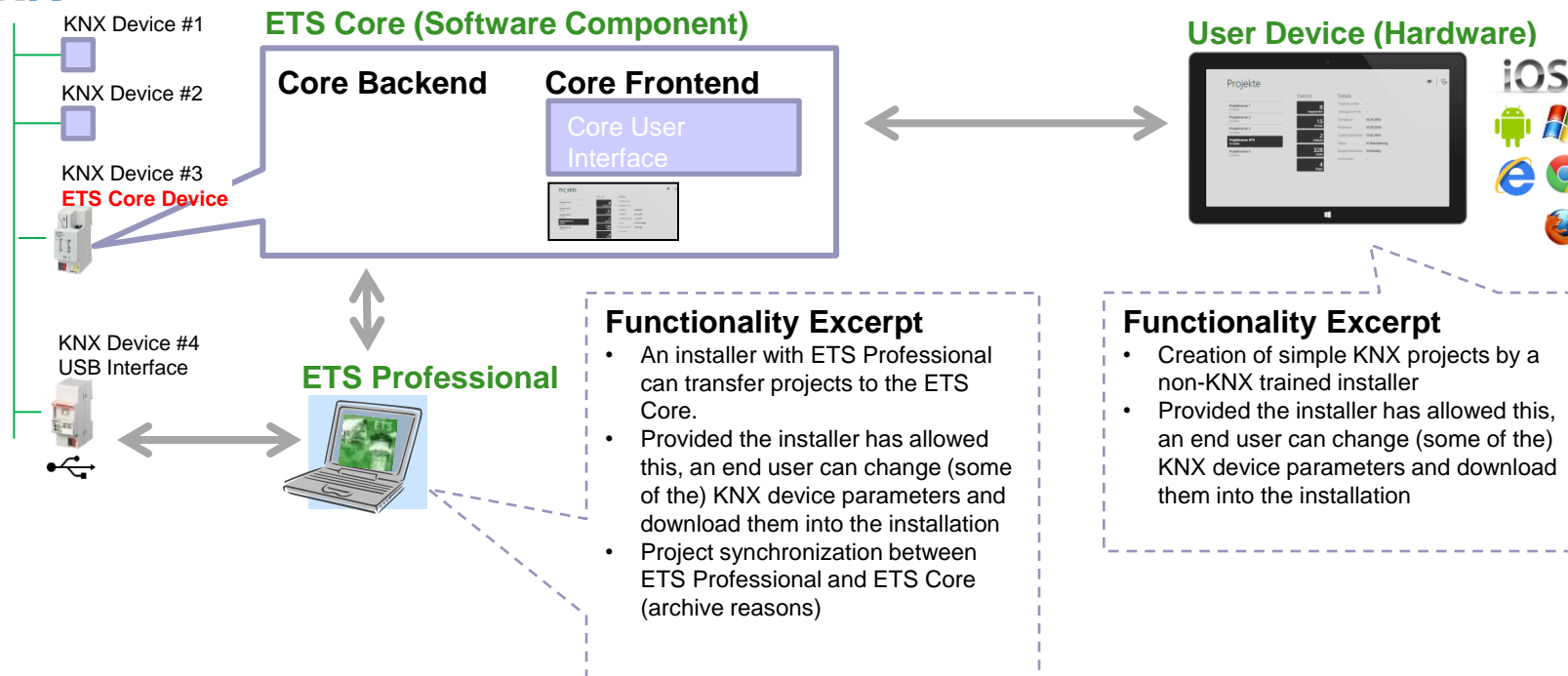
Functionality Excerpt

- Creation of simple KNX projects by a non-KNX trained installer
- Provided the installer has allowed this, an end user can change (some of the) KNX device parameters and download them into the installation
- Diagnostics of KNX projects

Available Q4/15

Upcoming Tool extensions – ETS Core

Technology Overview



Beta Version Q1/16

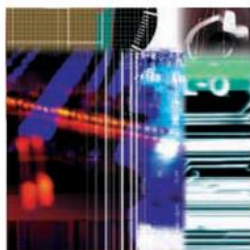
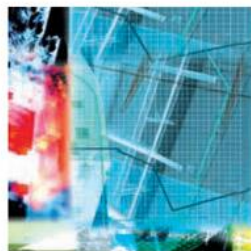
Upcoming KNX activities worldwide



*International Celebration Day of 25 years of
KNX October 2015*



*KNX Technology Track at Wireless Congress
Munich November 2015*



**Thank you for your
attention!**

**Contact: info@knx.org –
www.knx.org**

www.knx.org